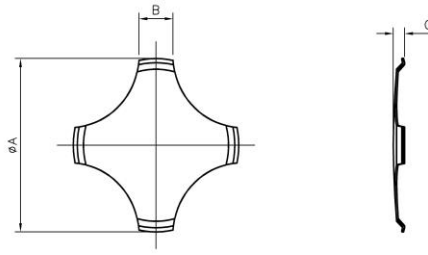


4-SLEG



Outer Dimension ϕA	Part No.	Material Thickness	Leg Width B	Height C	Trip Force	Plating	Contact Life cycle	PCB Layout Suggestion	
								Single Sided	Double
10 mm	DN 10-4-SLEG-280	0.10	2.35	0.72 \pm 0.05	280 \pm 30	nickel on both side	>1,000,000	TBA	TBA

REMARK:

Information up to 15/01/2017.

All dimensions in millimeter unless otherwise specified.

Dimensions in brackets are the design value, there may be a slight difference in actual product.

All dimensions subject to change without any notice.